

At the Precipice: Responses to the Climate Crisis at the Design Museum of Chicago

April 27, 2023

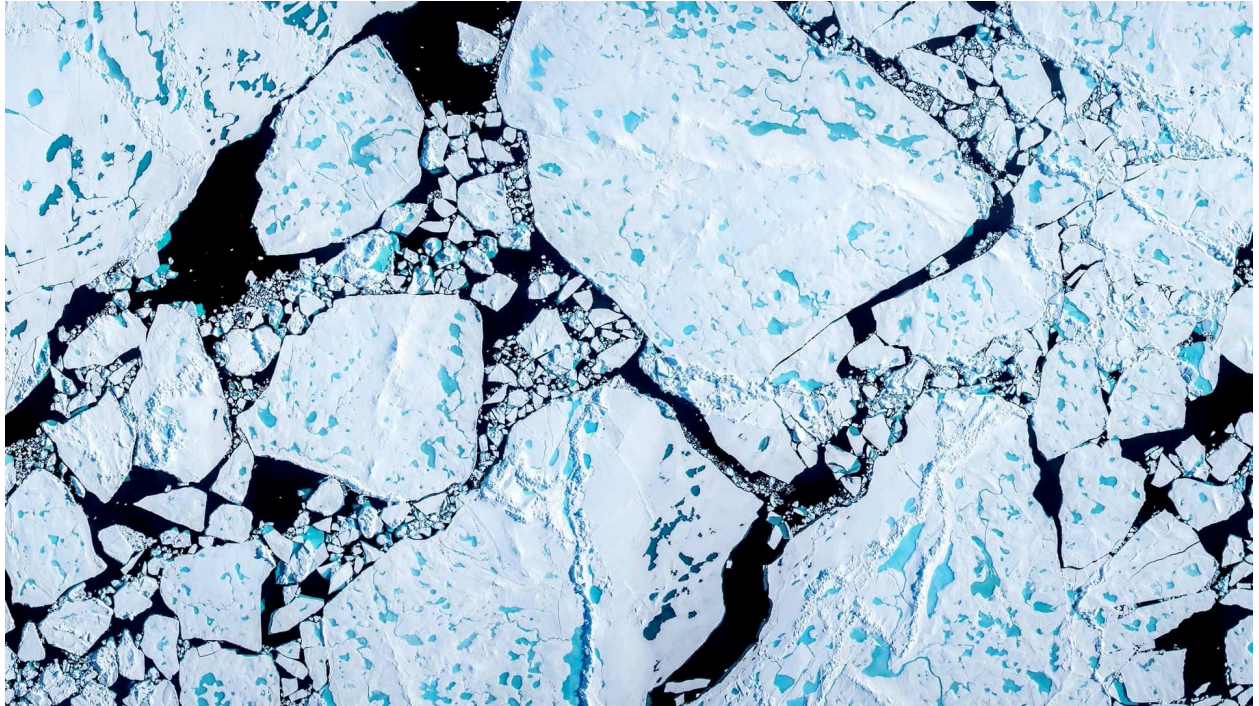
At the Precipice considers the role of physical and emotional reactions in the era of climate disaster. Given the proliferation of dire headlines and a public response that vacillates between denial and fatalism, the exhibition explores the use of color, tactility, material, and data not to avoid or disguise the issues but to instead offer accessible entry points.

Featured works utilize a wide scope of art and design methodologies to give shape to aspects of a daunting crisis as they interpret the real-world changes of rising temperatures, environmental destruction, forced migration, and the stark consequences of unsustainable lifestyles enjoyed by few at the expense of many. Included are works by [Selva Aparicio](#), [Morel Doucet](#), [Zaria Forman](#), [Luftwerk](#), [Nathalie Miebach](#), [Chris Pappan](#), [Redemptive Plastics](#), [The Tempestry Project](#), [Migwa Nthiga](#), and [Jean Shin](#).

At the Precipice explores how it feels to inhabit an irreversibly damaged planet facing a precarious future and considers the purpose



of art and design in understanding how our collective trajectory must rapidly change direction.



Zaria Forman *“Overview”*

“Overview” flies across 12 miles of Lincoln Sea in the Arctic Ocean north of Greenland, beginning at 80°53’33.86’ N 59°18’18.37’W and moving south to 83° 42’41.77’N 59° 24’6.56’W. The work was filmed on July 24, 2014. The cumulative ice loss in Greenland from 1992 to 2015 is estimated near 3,600 gigatonnes, contributing to global sea level rise by approximately 10 millimeters.