



# SURFACE

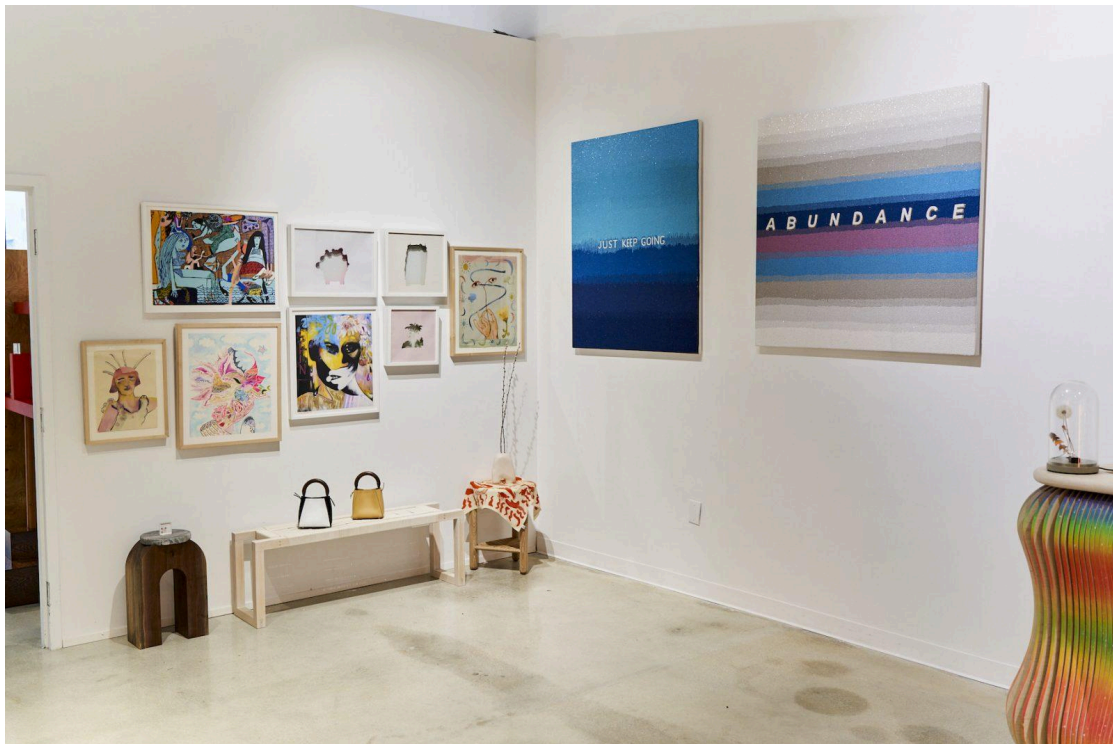
EXHIBITION

## A Virtual Look Inside “Woman Made” at Surface Area

Take a digital tour of the group exhibition, which features more than 40 women-identifying creators across art, design, and fashion.

BY THE EDITORS

April 5, 2022



Artworks by: Gabriella Picone, Summer Wheat, Isabelle Brouman, Jade Alexis Thacker, Marcela Sinclair, Stephanie Hirsch. Furniture by: SinCa Studio and Peg Woodworking. Decor by: Cindy Hsu Zell. Handbags by: MAS.

Winston Wächter Fine Art, Inc.

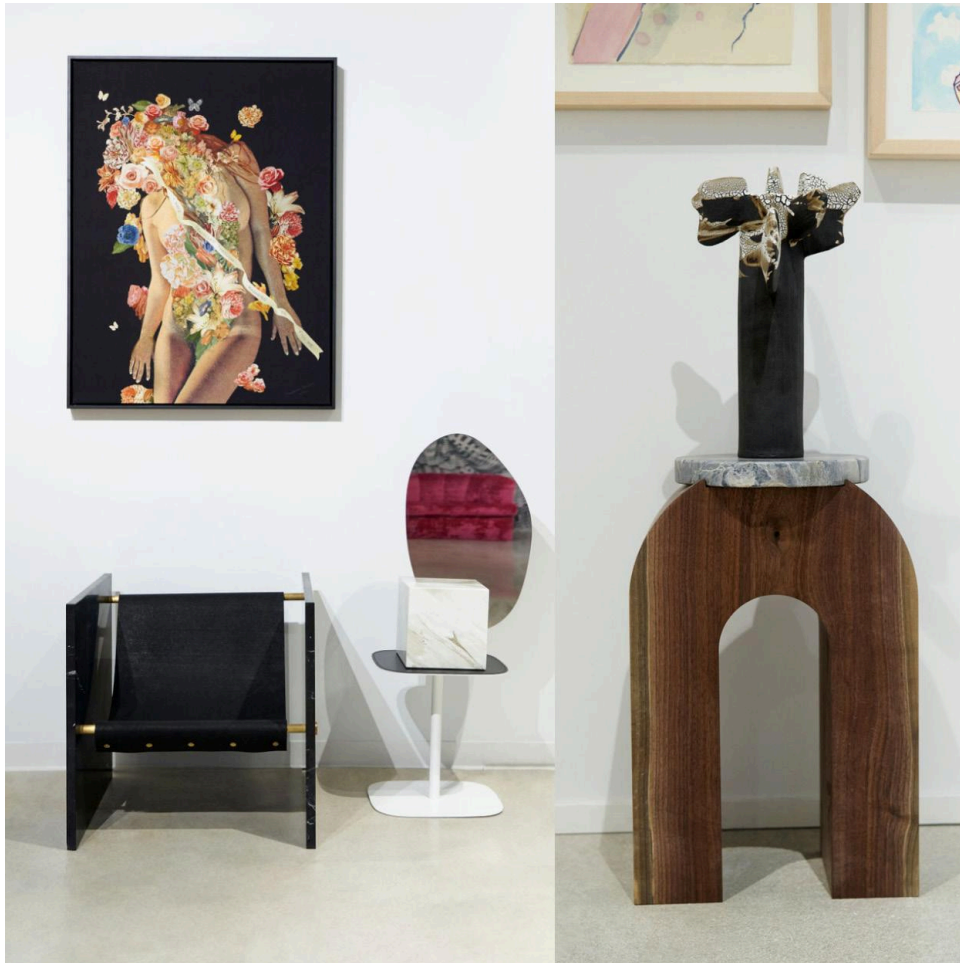
530 West 25th Street, New York, NY 10001 TEL [212] 255 2718 FAX [212] 255 2719 EMAIL [nygallery@winstonwachter.com](mailto:nygallery@winstonwachter.com) [www.winstonwachter.com](http://www.winstonwachter.com)



We're excited to announce an extension of "Woman Made," our group exhibition of female artists, designers, and makers, which opened in partnership with Glossier last month at Surface Area in the Miami Design District. The show will now run through the end of April.

Can't make it in person? We've created a digital viewing room with clickable links to our e-commerce platform Design Dose, so you can shop all of the hand-selected design objects, limited-edition products, and collectible furniture pieces from afar.

**Take the tour here, and check out our selects below.**



Photography by Krave Studios