

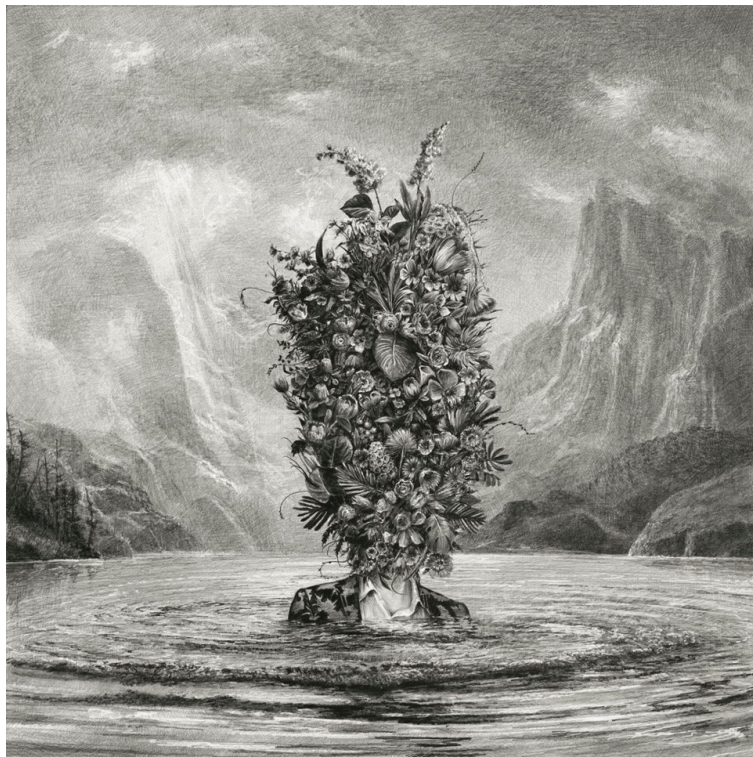
WW

WÄCHTER

Floral Arrangements Instigate Trivial Actions in Ethan Murrow's Meticulous Graphite Drawings

MARCH 7, 2022

GRACE EBERT



"Retreat" (2022), graphite on paper, 36 x 36 inches. All images © Ethan Murrow and courtesy of Winston Wächter Fine Art New York, shared with permission

In his solo exhibition *Magic Bridge*, Vermont-born artist Ethan Murrow (previously) overwhelms his subjects with sprawling floral assemblages that cloud their senses and judgment. The graphite drawings center largely on figures undertaking precarious and trivial activities to

Winston Wächter Fine Art, Inc.

530 West 25th Street, New York, NY 10001 TEL [212] 255 2718 FAX [212] 255 2719 EMAIL nygallery@winstonwachter.com www.winstonwachter.com



exert some form of control, often through futile underwater adventures and inexplicable actions atop wooden platforms.

On view at Winston Wächter through April 30, the meticulous renderings are tinged with parody and embrace the bizarre and indeterminate. In addition to the smaller works on paper, Murrow is also creating a large-scale mural in his signature imaginative style at the New York gallery—see the work-in-progress on Instagram. Each of the pieces “mull(s) the lines between logic and belief,” he writes.

A limited-edition lithograph of Murrow’s “Planting Time” is currently available from Deb Chaney Editions, and the artist also has works on view at Winston Wächter’s Seattle space through March 19.